

Zenith

The Multipurpose Juicer

Instructions



Congratulations on your purchase of The Zenith!

Here are some of its great features!

- The cold press masticating single auger retains far more of the juice's nutrition than other juicing methods - like a traditional millstone, only engineered for improved home use!
- The Zenith has a large variety of functions including blending, mincing, juicing, making pasta, mixing sauces, fish mincing, and making bean curds. All by the simple change of a nozzle.
- It operates at a low speed of 80 RPM, making it far less noisy than faster juicers as well as further aiding in nutrient and vitamin retention.
- The Zenith is engineered for ease of use; the entire process of disassembly, wash, reassembly and switching function takes less than 2 minutes!

INDEX

Important Safeguards	2
Product Standards	2
Parts List	3
Assembly Instructions & Cleaning	4
How To Use Your Zenith	5-6

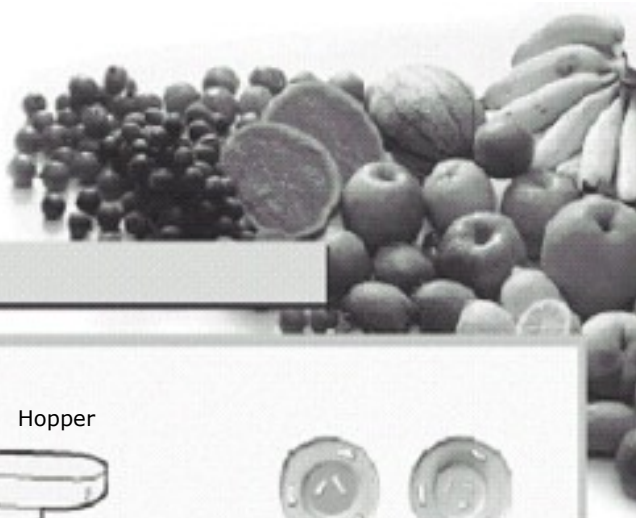
Important Safeguards

When using electrical appliances, basic safety precautions should always be followed including the following:

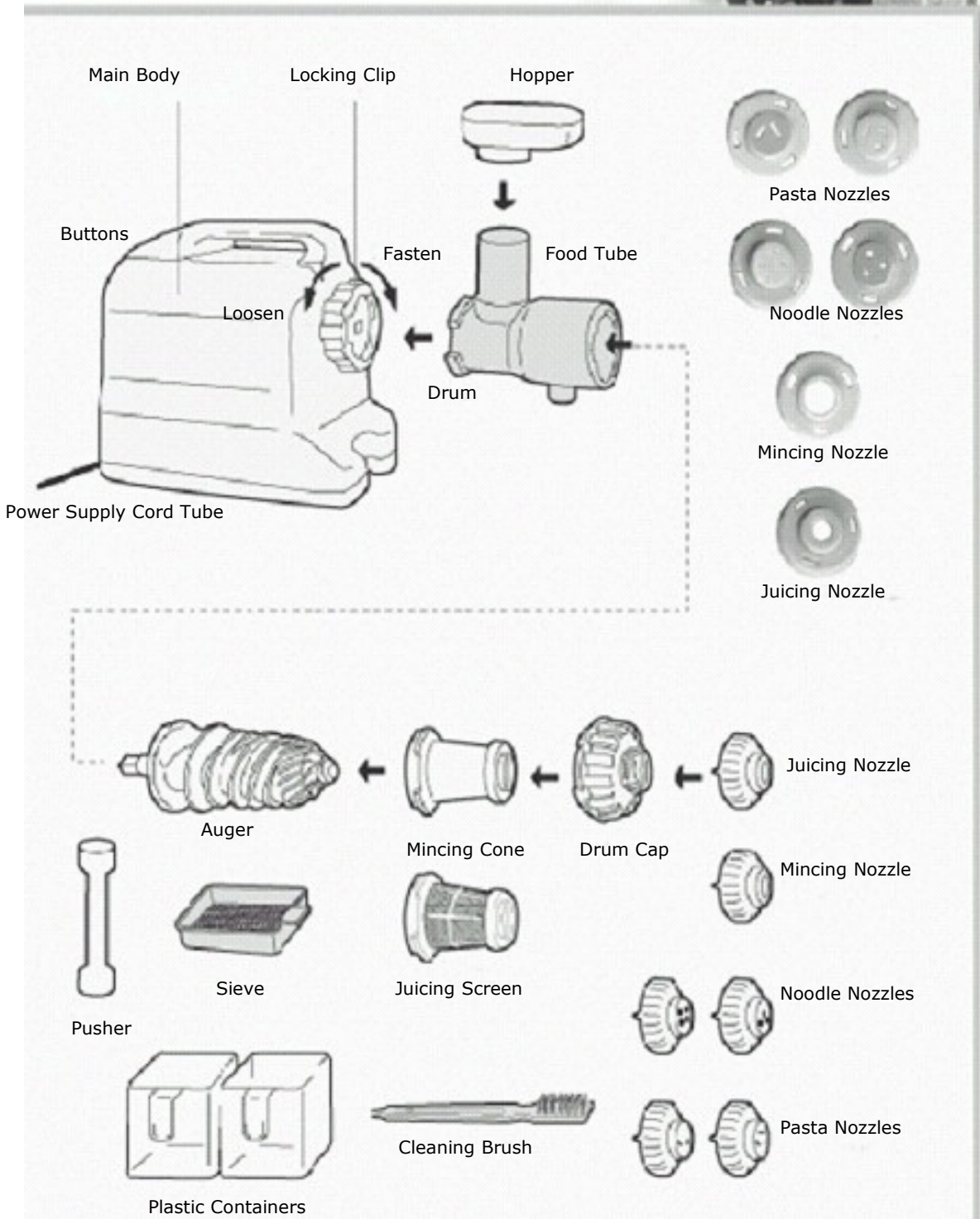
1. Read all instructions.
2. To protect against risk of electrical shock, do not put this appliance in water or other liquids
3. Close supervision is necessary when any appliance is used by or near children.
4. Unplug from power outlet when not in use, before putting on or taking off parts, and before cleaning.
5. Avoid contacting moving parts. Never feed dough by hand. Always use food pusher.
6. Do not operate any appliance with a damaged cord or plug, or after the appliance malfunctions or is dropped or damaged in any manner. Return appliance to nearest authorized service facility for examination, repair, or electrical or mechanical adjustment.
7. The use of attachments not recommended or sold by the manufacturer may cause fire, electric shock, injury, and possibly other hazards.
8. Do not use outdoors.
9. Do not let cord hang over edge of table or counter.
10. Always make sure juicer cover is clamped securely in place before motor is turned on. Do not unfasten clamps while juicer is in operation.
11. Be sure to turn switch to OFF position after each use of your juicer. Make sure the motor stops completely before disassembling.
12. Do not put your fingers or other objects into the juicer opening while it is in operation. If food becomes lodged in opening, use food pusher or another piece of food to push it down. When this method is not possible, turn the motor off and disassemble the juicer to remove the remaining food.
13. Check the hopper for presence of foreign objects before using.
14. SAVE THESE INSTRUCTIONS.

Product Standards

Specifications	Accessories
Model No. - #9990 Weight (.lbs) - 14.6 Dimensions - 15" x 12" x 7" (lgth x hght x wdth) Rating Power Voltage - 120V / 220-240V, AC / 50-60Hz Rating Power Consumption - 160W Revolutions Per Minute - 80 Motor - Single Phase Induction Length of Electric Cord - > 60" Fuse - 6A MAX Safe Continuous Operation - 33 minutes Remarks - Household Use Only	Operating Manual - 1 Mincing Corn - 1 Juicing Screen - 1 Cups - 2 Cleaning Brush - 1 Pusher - 1 6A Fuse (Bottom Board) - 1 Extra Nozzle - 6



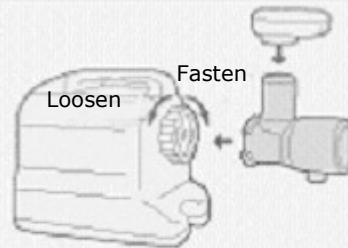
Parts List



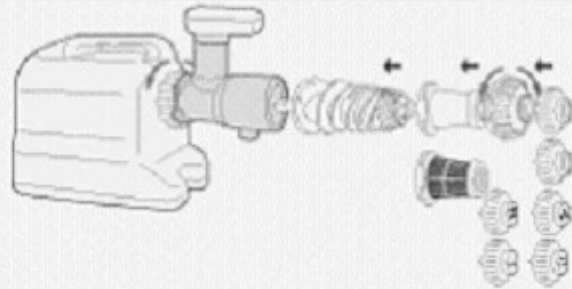
Assembly Instructions & Cleaning

Household Use

- 1** Attach drum to main body and mount hopper tube.



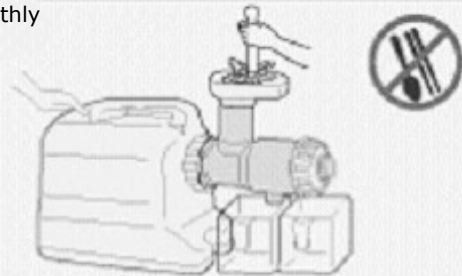
- 2** Insert auger into drum until you hear a click. Insert mincing cone or juicing screen over auger. Drum cap should be attached to end of drum, turn counter-clockwise to lock, Attach proper nozzle to counter-clockwise to proper position.



- 3** Place one of the enclosed plastic containers under the hold in the middle of the drum, with sieve attached to collect juice. Place the other plastic container at the end of the nozzle to collect the pulp. The sieve will collect any small particles, pulp, or foam that is extracted. **ONLY NOW CAN YOU PLUG IN THE UNIT (for safety).**



- 4** Press the [ON] button and start to feed materials smoothly into the Hopper with the pusher.



- 5** After using the juicer, be sure to unplug, disassemble, and clean thoroughly. If unit is not cleaned after each use, dried pulp can jam the machine.

- For vegetables, such as carrots, cut to appropriate size.
- For grains, wash and soak in water before grinding, especially for soaked rice powders, put them into the food tube with more water.
- If this product stops due to excessive input, press the [REVERSE] button. After the auger reverses 2 or 3 times (a few seconds), the machine should be ready for normal operation again.

How To Use Your Zenith

Seasonings



Mincing cone + Mincing Nozzle (3rd Position)

For example, SALSA: Mix fresh hot pepper, onion, tomato, ginger, and garlic, and mince together to make salsa. Repeat mincing to make it finer.

Making Pasta / Noodles



Mincing cone + Noodle or Pasta Nozzle (3rd position)

- 1) Mix flour and farina at 5-1 ratio to make slightly thick dough.
- 2) Without extractor or nozzle, put dough into food tube repeatedly.
- 3) When extracting noodles, sprinkle flour on noodles. If noodle is not smooth, run through again.

Seasoned Rice Cake



Mincing cone + Mincing Nozzle (3rd position)

- 1) Steam rice, salt, and sesame oil.
- 2) Extract rice twice to get seasoned rice cake.
- 3) Boil seasonings first, then boil rice bread stick slightly.

Rice Cake



Mincing cone + Mincing Nozzle (3rd position)

- 1) Steam glutinous rice, mix with salt and sesame oil.
- 2) Extract rice twice to get seasoned rice cake.



Vegetable Juice



Juicing Screen + Juicing Nozzle
(any position)

- 1) Clean vegetables, then let them soak in water for 5 minutes.
- 2) Juice them with the juicing nozzle set to whatever position you desire (the tighter it is, the finer the juice).

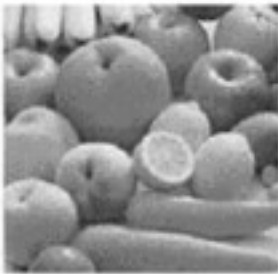


Wheatgrass Juice



Juicing Screen + Juicing Nozzle
(2nd or 3rd position)

- 1) Wash wheatgrass and pine needles.
- 2) Juice them.



Extracting juice from Fruits or Carrots



Juicing Screen + Juicing Nozzle
(2nd position)

When extracting juice from fruits, cucumbers, and carrots, the pulp can still contain juice. To fully juice, mix the fruits/carrot/cucumber with highly fibered vegetables.

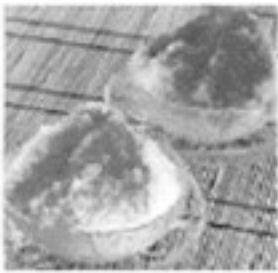


Grape Juice

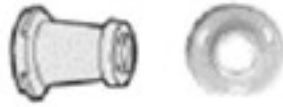


Juicing Screen + Juicing Nozzle
(2nd position)

Grapes usually have seeds that can block up small holes of the juicing screen, causing damage or malfunction, so be sure to seed them first.



Mincing Ice or Frozen Fruit



Mincing Cone + Mincing Nozzle
(1st Position)

When mincing ice, be sure to press the pusher gently, and remember to use the nozzle on 1st position. When mincing frozen fruit, cut into small chunks. You may adjust the mincing nozzle to 2nd or 3rd position for finer frozen fruit sorbet.

IMPORTANT – when mincing ice, you **MUST** use the Mincing Nozzle! If not, so may damage your Zenith and void any warranties or guarantees.